

A panoramic view of Sugarloaf Point Lighthouse at sunset. The scene is framed from the left by a white architectural element, possibly a balcony or part of the lighthouse structure. The sky transitions from a deep blue at the top to a warm orange and yellow near the horizon. The ocean is a mix of deep blue and turquoise, with white waves breaking on a sandy beach. In the foreground, a paved path with a white railing leads down a grassy hillside towards a white building with a gabled roof and two chimneys. The surrounding vegetation is lush and green, with some trees showing autumnal orange and yellow hues. The overall atmosphere is serene and picturesque.

SUGARLOAF POINT LIGHTHOUSE
Holiday accommodation - Seal Rocks, NSW



Welcome

Entering the arch of trees that line the approach to Sugarloaf Point, you feel you are walking over the threshold into an enchanted world, a timeless secluded realm steeped in history and unspoiled natural beauty.

Retreat into the seclusion of a lighthouse keeper's cottage, and walk in the footsteps of past guardians to a wondrous cliff top sentinel - a keeper of the night that sweeps a benevolent gaze over an engagingly unique place.

It is our great pleasure to present to you Sugarloaf Point Lighthouse Holiday Accommodation, a truly unique, award winning "bucket list" holiday destination.

Yours sincerely,
Judy, Linda and Terry
Custodians
Sugarloaf Point Lighthouse Cottages







Unique accommodation

The Sugarloaf Point Lighthouse precinct offers 3 self-contained heritage cottages nestled into the hill below the light-station.

Circa 1875, they are newly restored, offering beautifully appointed old world charm with modern conveniences.

The Head Keeper's Cottage commands uninterrupted ocean views and includes 3 queen bedrooms, 2 of which include an additional single bed.

The two Assistant Keeper's Cottages enjoy expansive ocean views, are thoughtfully appointed and have 2 Queen bedrooms each, with an additional single bed in one of the bedrooms and a double sofa bed in the lounge.

All cottages are fully equipped for self-catering and are prepared with bed and bath linen for your stay.

Each cottage has an abundance of outdoor space including private BBQ facilities.



Sugarloaf Point Lighthouse





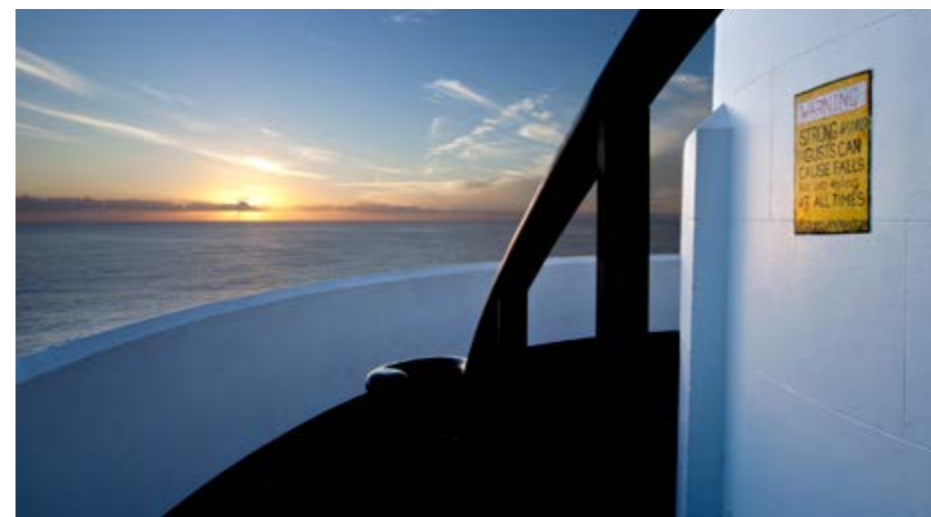
Astonishingly beautiful

Whilst the days at Sugarloaf Point provide an opportunity for many varied and rich experiences, it is the coming of night that brings something uniquely mesmerising.

On a cloudless night, step out of your cottage to the lighthouse and meet a sight to behold.

Under a glittering blanket of countless galaxies a golden arc of 16 light rays project out to the horizon, creating a gilded frame that surrounds the headland.

The hypnotic rotation of this silent sentinel creates the humbling and profound feeling that you are standing at the very centre of the infinite universe.







Enthralling wildlife

One of the greatest delights of any stay at Sugarloaf Point is getting to meet the neighbours in their native habitats.

An ornithologist's wonderland, the sky is brought to life with countless species of bird, from the smallest of finches through to the magnificent splendour of one of Sugarloaf's resident sea eagles.

Yet it is a visit during whale migration that brings some of the most impressive sights.

The unique formation of Seal Rocks, that which makes it so dangerous to shipping, provides Sugarloaf with an unparalleled position from which to view one of nature's wonders.

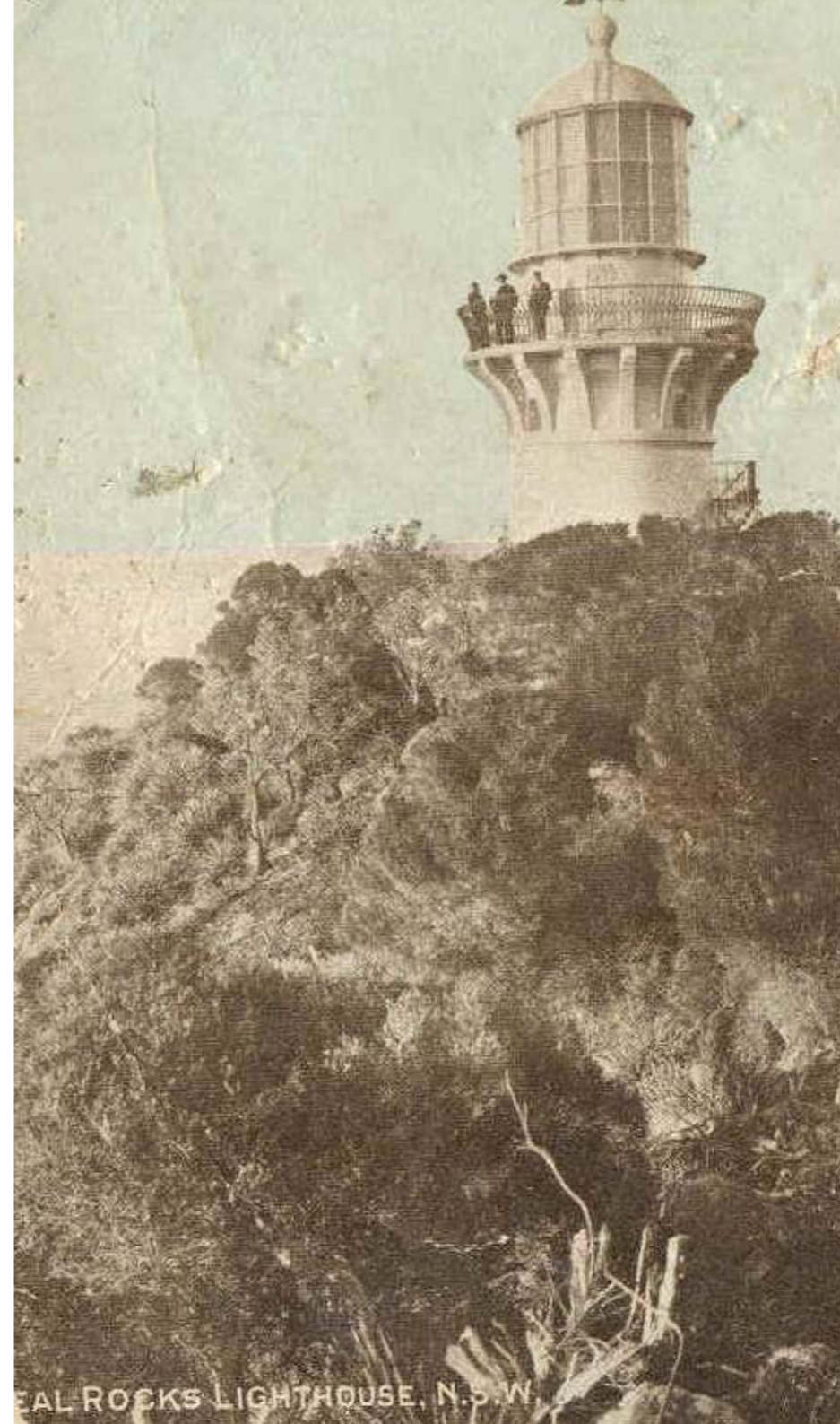
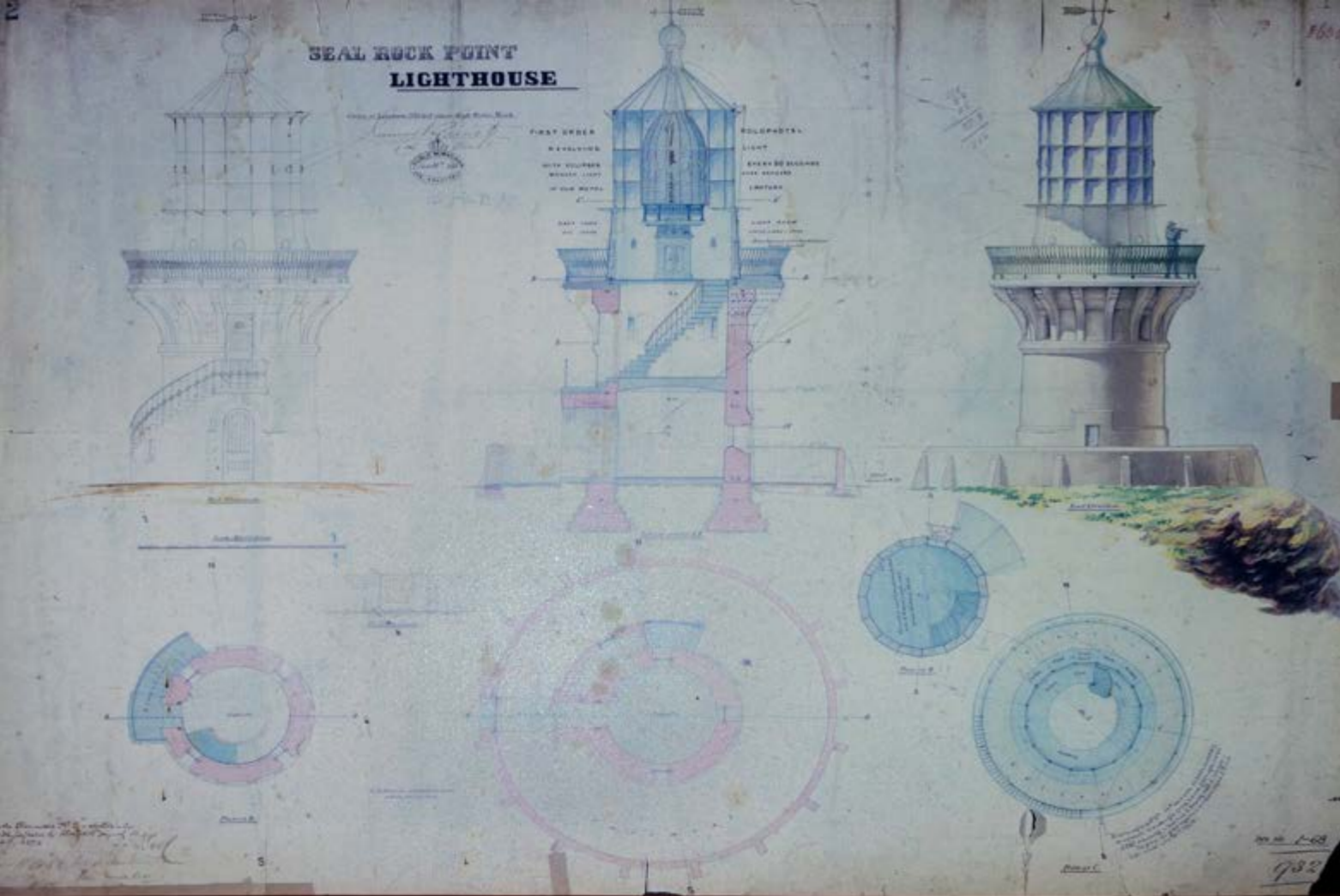
Passing close to shore whales can be viewed, while you nestle in the comfort of your Lighthouse Keeper's Cottage.

There are ocean views aplenty from your holiday abode!



Sugarloaf Point Lighthouse





A

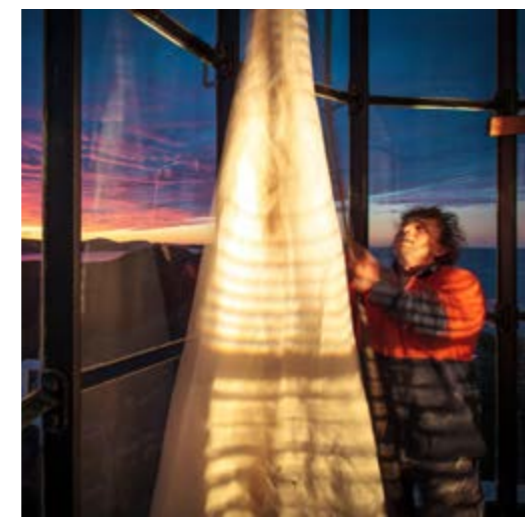
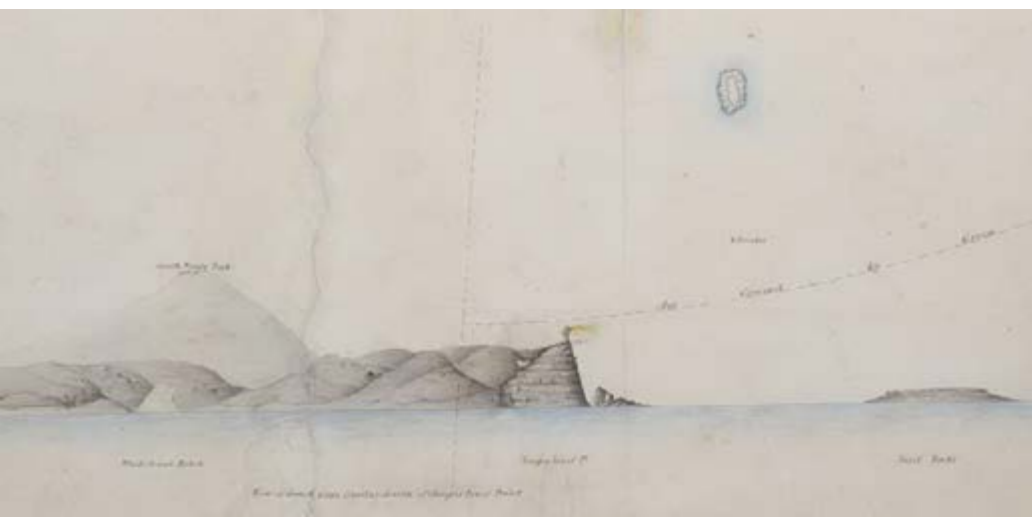
A rich history

Sawtooth and Seal Rocks have an infamous history of hazardous maritime passage.

As a site of many a shipwreck, Sugarloaf Point was the first in the "highway of lights" on the NSW coast. Constructed by the Colonial Architect James Barnet in 1875, the lightstation still utilises its original 16 panel fresnell lens dioptics.

Despite this disasters can still occur, and Seal Rocks is the site of one of Australia's worst shipping disasters, the wreck of the SS CATTHERTHUN in 1895, with the loss of 55 lives.

Now fully automated, Sugarloaf Point remains a working light station and the reuse of the keepers' cottages preserves the site for future generations to enjoy



SEAL ROCKS LIGHTHOUSE, N.S.W.





Delightful location

This idyllic area offers a moderate climate of warm summer seas and cool summer breezes, sunny winter days and cosy winter nights.

The immediate vicinity of Seal Rocks offers clear bays for swimming, snorkelling, boating and fishing.

There's memorable diving at local shipwrecks and grey nurse habitats.

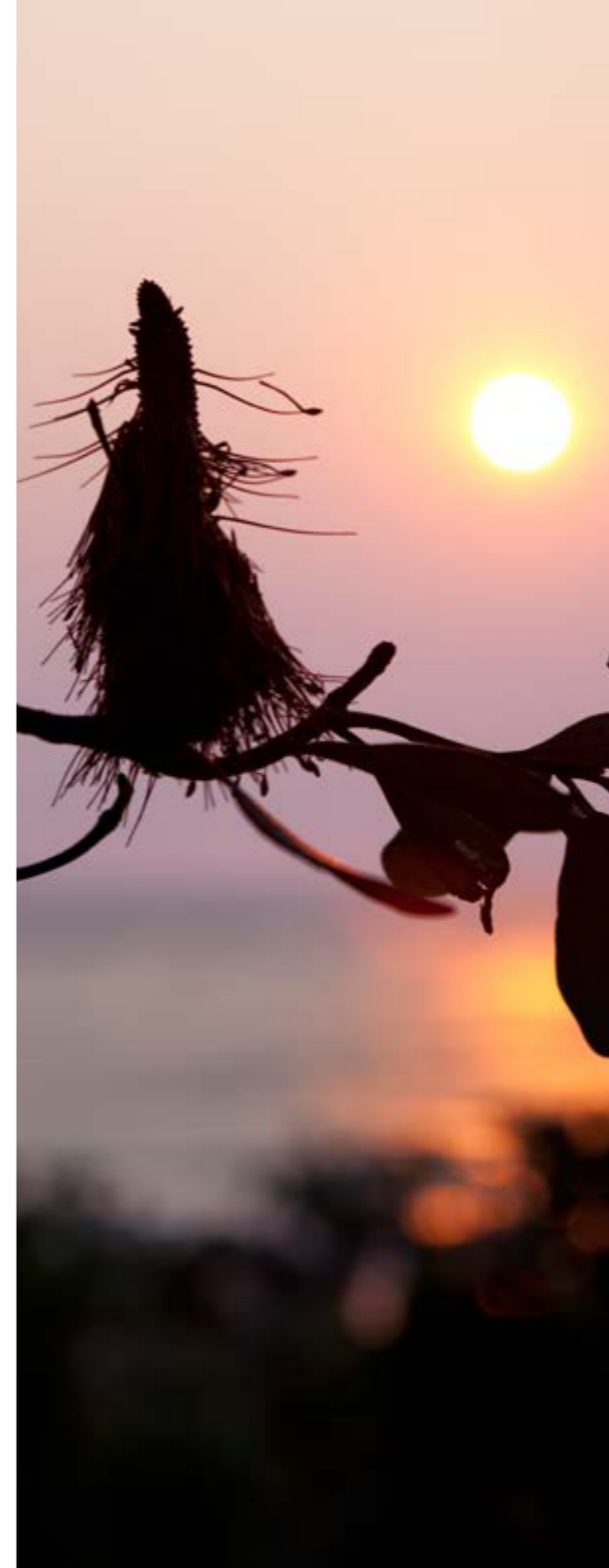
Below the lighthouse to the south you'll find great surf at Lighthouse Beach, and from the point you will be perfectly positioned to watch dolphins surfing the waves and migrating humpback whales.

The adjacent coastal dunes and waterways of Myall Lakes National Park offer bush walking, birdwatching and boating options, as well as historic Aboriginal and early settlers' sites.



Sugarloaf Point Lighthouse





W

Wondrous surrounds

Each season at Sugarloaf Point brings its own individual character and beauty.

Enjoy the simple pleasures of sitting back on a balmy Summer's evening with the lingering taste of salt from a late afternoon swim, or the blissful solitude of a wintery walk on a deserted storm-swept beach.

Annually from late Autumn through Spring the spectacular sight of countless migrating whales can be seen stretching to the horizon, their paths illuminated by the early morning sun catching their rhythmic spouting sprays.

Whilst each visit will create a unique experience, the sheer beauty and solitude of this effortlessly timeless location remains constant.



Sugarloaf Point Lighthouse





Getting There

Sugarloaf Point Lighthouse is perched above the tiny, sleepy fishing village of Seal Rocks and nestled in the northern corner of Myall Lakes National Park.

It is 3 hours north of Sydney and 40 minutes south of Forster on the mid-north coast of New South Wales.

Nearby seaside villages, such as Blueys and Boomerang Beaches, offer a number of dining and shopping options. Further afield Forster/Tuncurry provides the benefits of a regional centre.





Contact us

We hope that you have enjoyed this brief introduction to Sugarloaf Point Lighthouse.

Although these photos provide an appealing overview, they provide only a moderate sense of the outstanding location, pristine environment and unique appeal of this captivating award winning sanctuary.

Whether you are a couple seeking a romantic escape, or a family looking for a holiday with a difference, Sugarloaf Point provides the perfect place to get away from it all.

For further information please do not hesitate to contact us or simply click on the following link.

Thank you for your interest, we look forward to welcoming you.

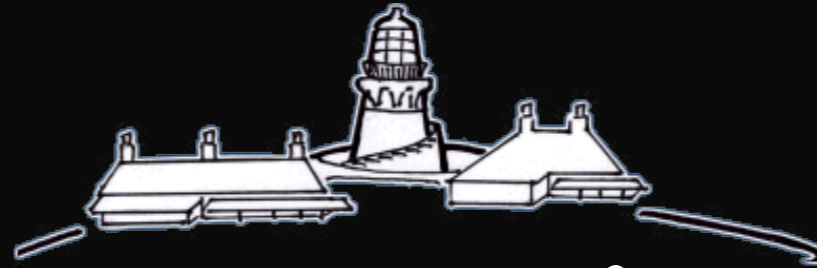
Yours sincerely,

Judy, Linda and Terry

Carjuli Pty Ltd, ABN 70 129 331 522
Judy Gagg, Linda Davidson and Terry Brooker



Sugarloaf Point Lighthouse



Sugarloaf Point Lighthouse
Holiday Accommodation



[Click here to close this eBrochure](#)



T +61 2 4997 6590 E stay@srla.com.au W www.srla.com.au
Kinka Road, Seal Rocks NSW 2423 Australia